



Argyll Sea Kayak Trail
Slighe Curcachan Earra-Ghàidheil

North Bute

ADDITIONAL TRAIL ROUTES & DEVIATIONS

The North Bute Access Point can provide a starting point for exploration into Loch Riddon, or Loch Striven, both of which can offer green views on either side. If heading further south, you could embark on a circumnavigation of Bute. This could include Great and Little Cumbrae Islands, and Inchmarnock.

Further afield is the east coastline of Kintyre, and the Isle of Arran, although you would need to have the relevant experience and personal ability to undertake such a journey, as longer open water crossings are necessary.

HAZARDS

Tide against wind conditions can make the section around Ardlamont Point challenging, as well as when heading up into Loch Fyne. If there is a northerly wind, hugging the east coastline can provide some shelter until time to cross to Tarbert, although it may be worth continuing further up the loch to make the crossing easier by paddling on the diagonal/downwind.

The Kyles are subjected to high usage by sailing craft, and there are a couple of popular anchorages at the northern end – Eilean Dubh, and in between Buttock Point and the Burnt Islands.

Ferries also run at numerous points on these two sections of the trail, so please be careful and avoid them at all times.

Tarbert is a working harbour, so craft will be encountered here as well. Please follow the directions to the access pontoon carefully, so as to avoid any unnecessary contact.

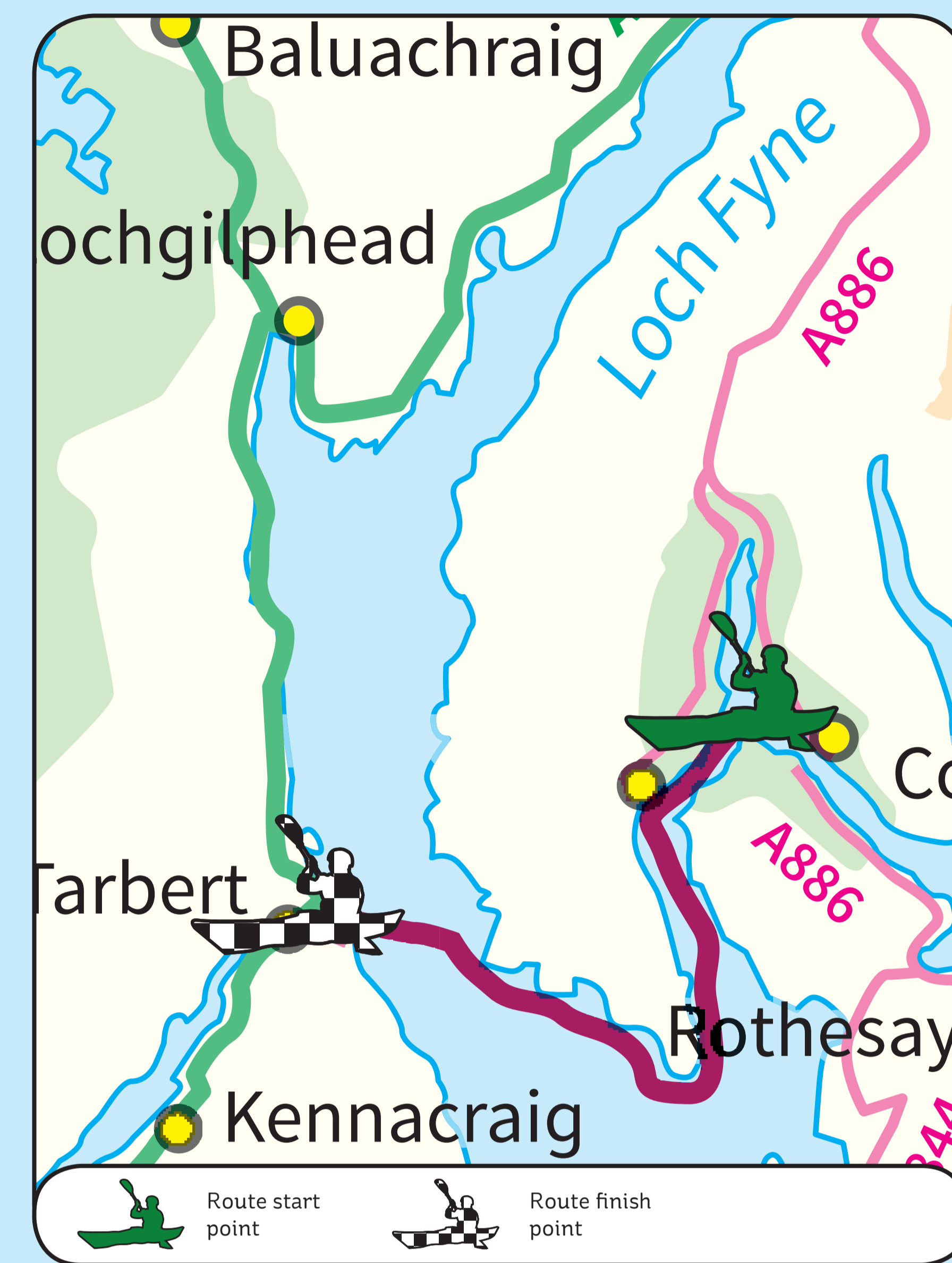
NORTH BUTE TO TARBERT - 29km / 16Nm

55°55.460'N 5°10.816'W to 55°51.974'N 5°24.254'W

Grid Reference O14747 to 871689

OS Landranger Map 63 & 62

OS Explorer Map 362 & 357



Contains Ordnance Survey data © Crown copyright and database right 2014.

where you will need to cross the entrance to Loch Fyne to the point at Rubna Clach an Tràghaidh.

From here, there is less than 4km until you reach the access point in East Loch Tarbert. You first pass Eilean a' Chomhraig, and then the rocky coastline at Mealdarroch Point. Continue until you come to the ferry terminal. Wait until it is safe to pass, then paddle round to the yacht club where you will come across the access slipway.

Secure kayak racks are available if needed. Turn left off the main access bridge (from the pontoons), and walk past the Harbour Office, Toilets/Showers and up the steps to the storage racks (see site map).

TIDAL DIFFERENCES

HIGH WATER TIMES

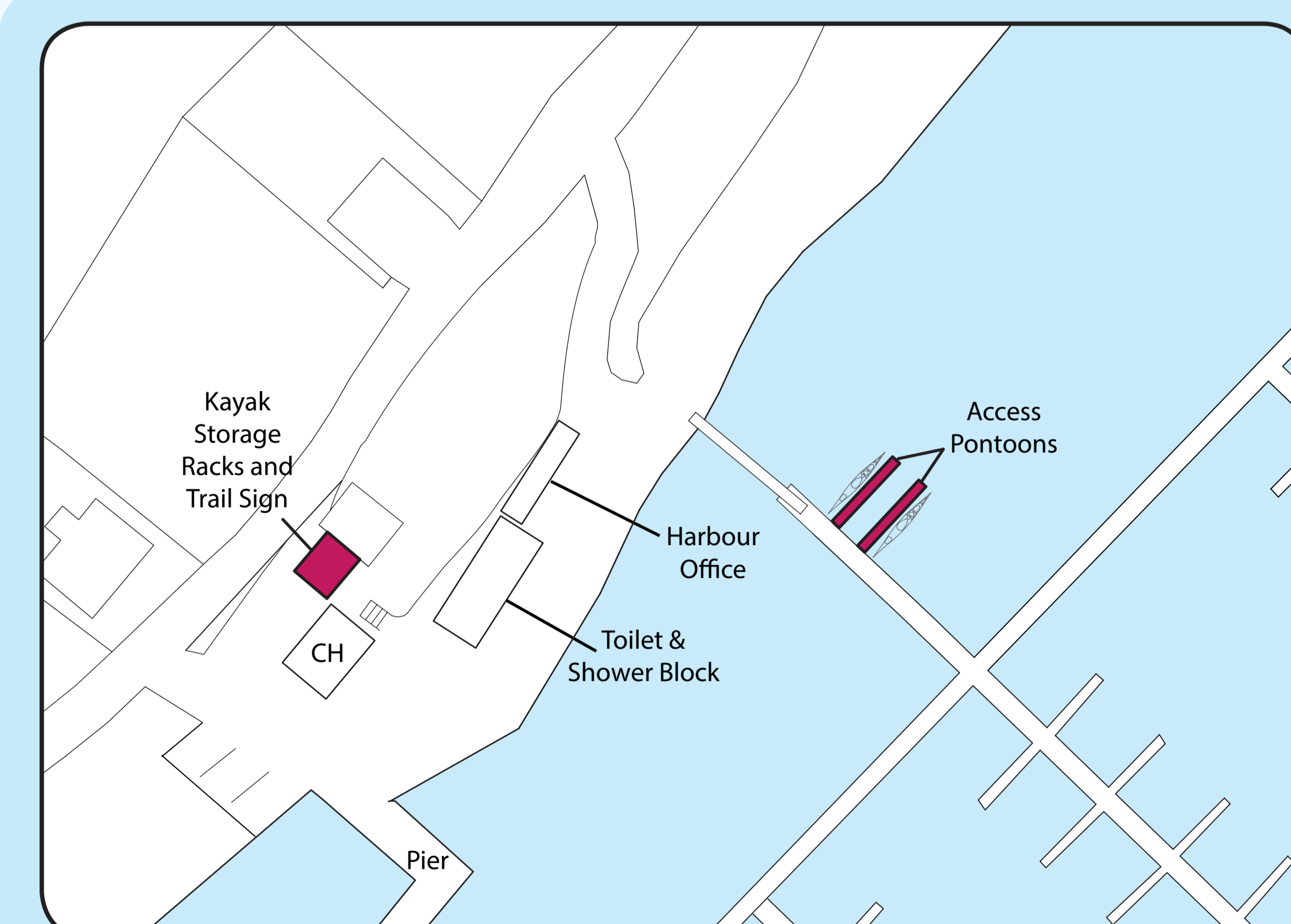
East Loch Tarbert	High Water	-0005 HW Greenock
	Low Water	-0004 LW Greenock
Tighnabruaich	High Water	+0003 HW Greenock
	Low Water	-0014 LW Greenock

DESCRIPTION OF ROUTE

When leaving the North Bute site, head out to the left past Buttock Point and continue round to the West Kyle. Rubha Bàn is on your right as you paddle south, and then Tighnabruaich. From here, or Kames further south, you can restock supplies. You can paddle down either side of the Kyle, but need to be at Blindman's Bay on the Cowal coastline before you begin to round the headland to Ardlamont Point.

The wind and tide can make the point a tiresome passage, so check prevailing conditions.

Once past the point and the bay, Kilbride Bay appears on the right. Continue past Sgat Beag and Sgat Mòr until Port Leathan.

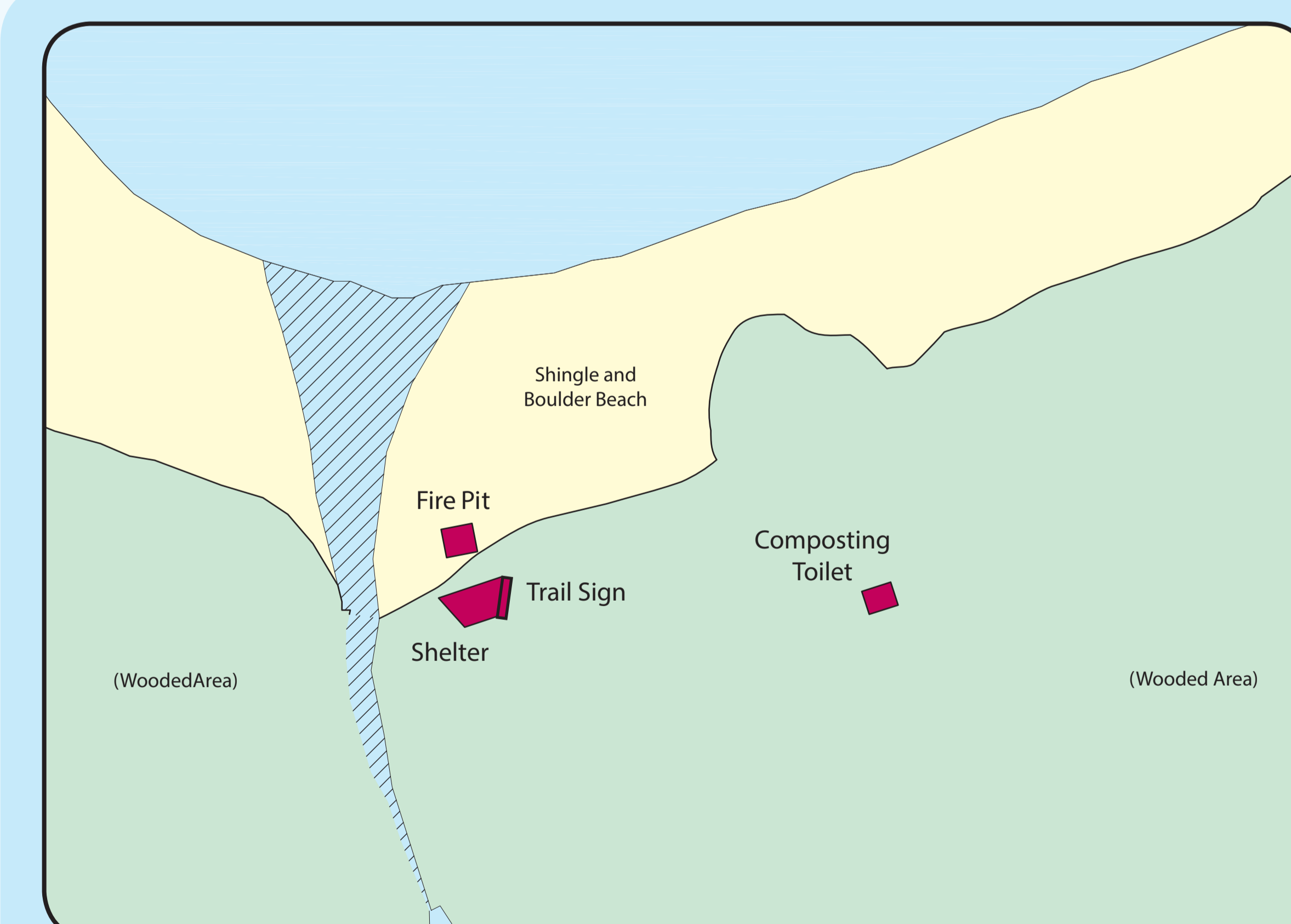


Tarbert

LOCAL FACILITIES

- Accommodation
- Bank/Cash Point
- Food & Drink
- Shops
- Showers (at Harbour, fee required)
- Toilets
- Tourist Information

A portage trolley is provided to move kayaks to the kayak storage racks. Please enquire in Harbour Office, 01880 820344. Please note the Harbour opening times:
Monday – Friday Normal office hours
Saturday – Sunday Summer – extended hours
Winter – closed
Working in partnership with Tarbert Harbour Authority



North Bute

LOCAL FACILITIES

- The North Bute site is a remote wild camping area, and therefore no facilities are available other than those provided on site.
- Situated within a Site of Special Scientific Interest, so no felling of trees allowed for fire wood (Bute Forest will seek to maintain a supply for visitors to the site).

Working in partnership with Bute Forest

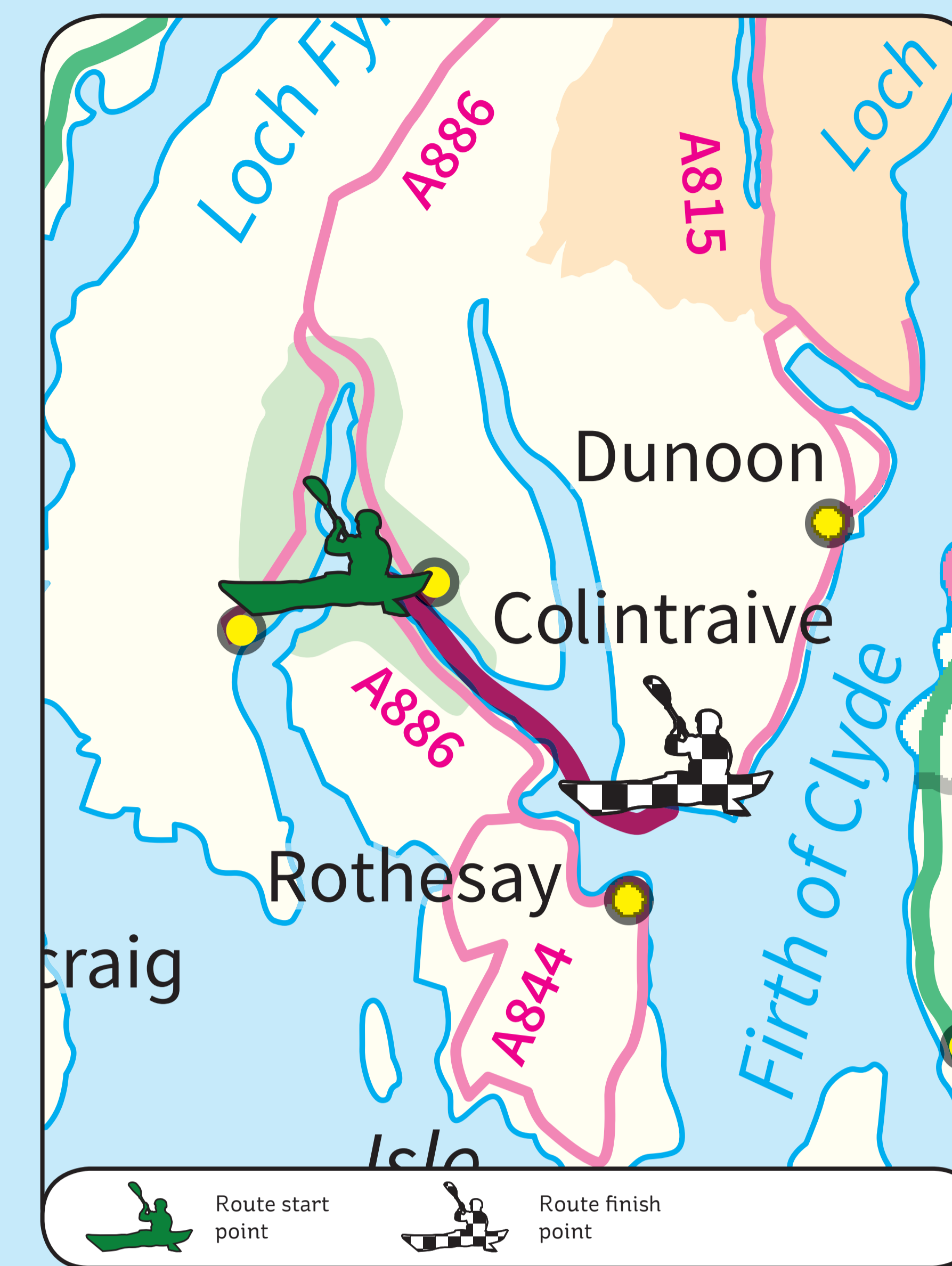
NORTH BUTE TO TOWARD - 13km / 7Nm

55°55.460'N 5°10.816'W to 55°51.918'N 5°01.313'W

Grid Reference O14747 to 110677

OS Landranger Map 63

OS Explorer Map 362



Contains Ordnance Survey data © Crown copyright and database right 2014.

be aiming for the old oil rig construction site at Ardyne Point. As an alternative, you could follow the Cowal coastline, passing Bargehouse Point and arriving at Strone Point. From here you paddle across the entrance to Loch Striven and on to Port Lamont, ending up at Ardyne Point.

Toward Quay and the access point is a further 1km along the coast, at the site of the sailing club.

Kayak storage available by arrangement by arrangement with Toward Sailing Club - www.towardsc.org.uk

TIDAL DIFFERENCES

HIGH WATER TIMES

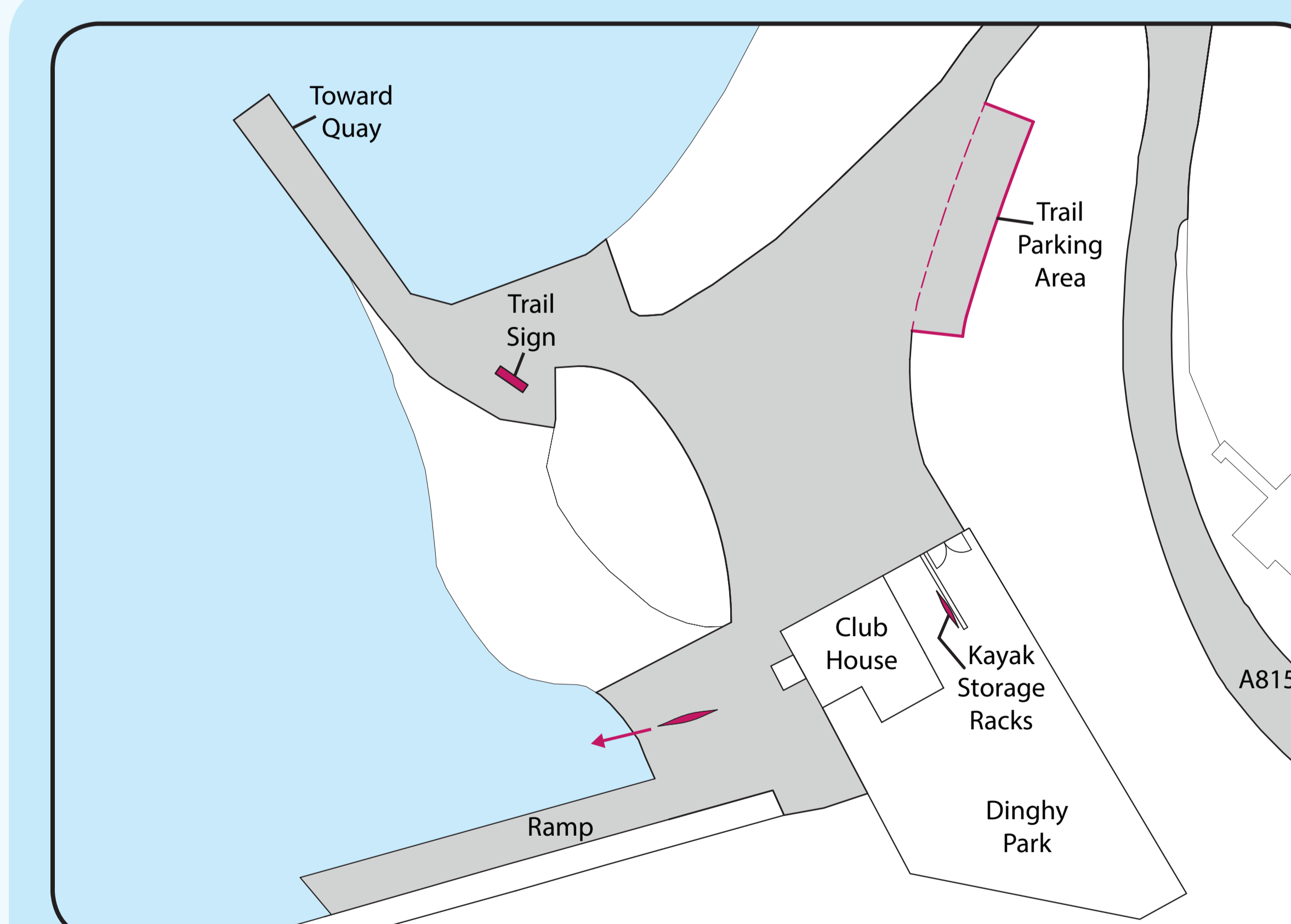
Rubha ABhodaich	High Water	-0018 HW Greenock
	Low Water	-0007 LW Greenock
Burnt Islands	North Channel	- 5kn springs
	South Channel	- 3kn springs
Rothesay Bay	High Water	-0019 HW Greenock
	Low Water	-0004 LW Greenock

DESCRIPTION OF ROUTE

When leaving the wild camping site, you can either take the southern passage through the Burnt Islands, or the northern one. The latter has a stronger 5kn flow at spring tides, but is a shorter passage for all craft, so the choice is yours.

From here, you pass Balnakilly Bay, and then the ferry terminal at Rhubodach (a regular crossing, so please be cautious).

Continuing down the East Kyle and admiring the scenery, you want to be paddling on the Bute side so that you arrive at Ardmaleish Point. Rounding the headland takes you to Undraynian Point, then head across Kames Bay to Port Bannatyne. The shortest crossing is from here, and you should



Toward

LOCAL FACILITIES

- Toilets & Showers available when club house open
- Kayak storage available by arrangement with Toward Sailing Club.

Working in partnership with Toward Sailing Club - www.towardsc.org.uk

PARKING

Parking is available at both Tarbert and Toward. As North Bute is a remote site, it is only accessible by the water.

LITTER

Paddlers visiting any of the access points on the Argyll Sea Kayak Trail are asked to follow the Leave No Trace principle. Please use litter bins where provided, and remove all rubbish and dispose of responsibly where not.

SAILING

The Argyll Sea Kayak Trail follows the Argyll coastline, used extensively by sailing vessels. Please be mindful of other water users at all times, and act responsibly.

Please follow the seven Leave No Trace principles

- 1 Plan Ahead and Prepare
- 2 Travel and Camp on Durable Surfaces
- 3 Dispose of Waste Properly
- 4 Leave What You Find
- 5 Minimize Campfire Impacts
- 6 Respect Wildlife
- 7 Be Considerate of Other Visitors

The member-driven Leave No Trace Centre for Outdoor Ethics teaches people how to enjoy the outdoors responsibly. This copyrighted information has been reprinted with permission from the Leave No Trace Centre for Outdoor Ethics: www.LNT.org

HM Coastguard

Maritime & Coastguard Agency - www.dft.gov.uk/mca

Stornoway 01851 706796

Operational Area: Cape Wrath to Ardferrn (Mainland) including South to and including Isle of Mull, Luing and Scarba, Barra Head to Butt of Lewis and St Kilda

Belfast 02891 463933

Operational Area: Mull of Galloway to Ardferrn, including the Islands (North to and including Jura and Colonsay)

Useful organisations and contact details

Scottish Marine Wildlife Watching Code - www.marinecode.org
Providing guidelines and advice when watching wildlife in Scotland.

THE THREE PRINCIPLES

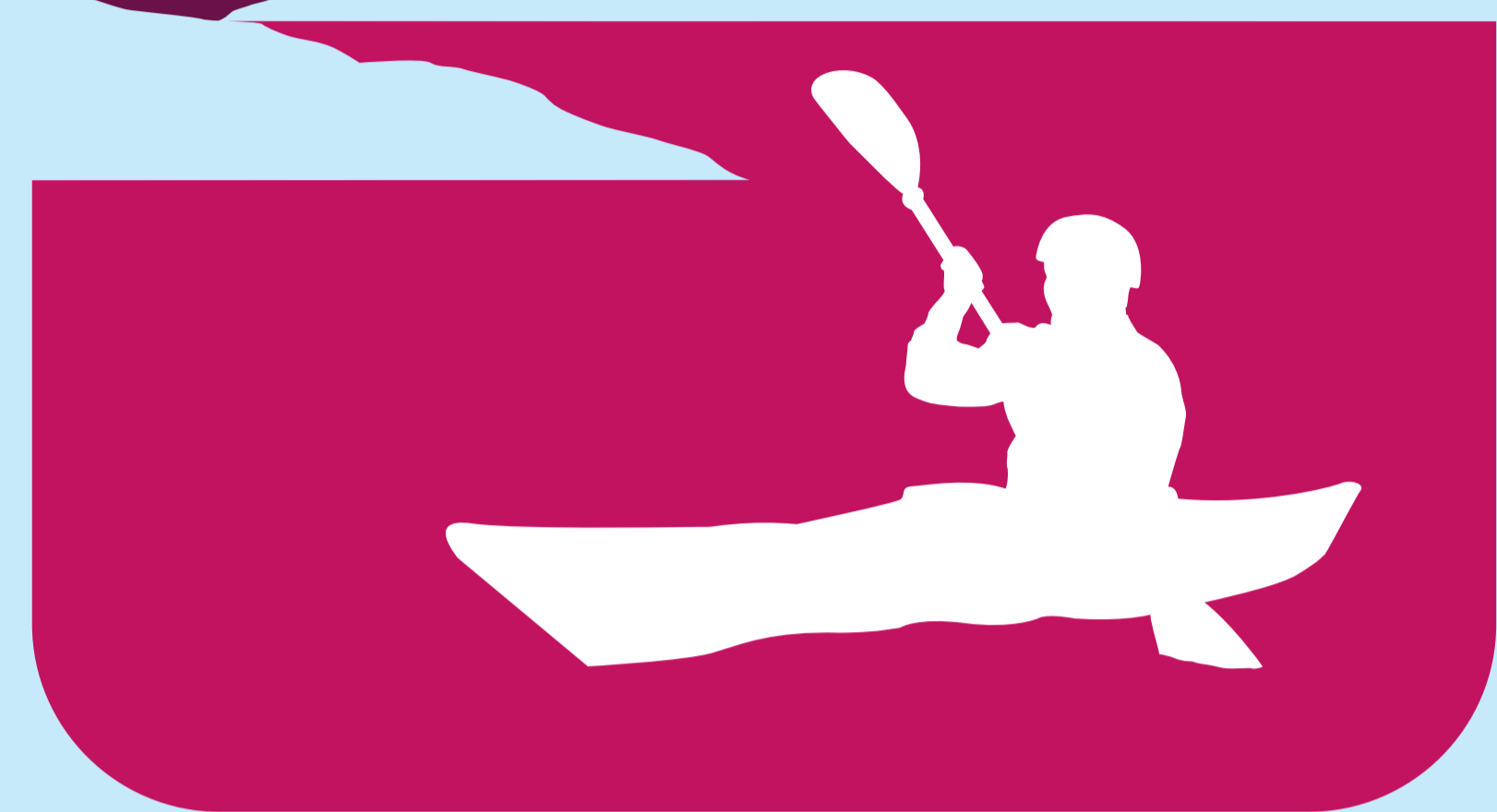
- 1 Be Aware by learning as much as you can about the animals
- 2 Take Responsibility for your actions
- 3 Have Respect for other people, wildlife and the environment

Marine Conservation Society, the UK charity for the protection of our seas, shores and wildlife
www.mcsuk.org

Scottish Environmental Protection Agency, pollution hotline
0800 80 70 60
www.sepa.org.uk



Argyll Sea Kayak Trail



North Bute

Argyll Sea Kayak Trail - Slighe Curcachan Earra-Ghàidheil

This access site is part of the Argyll Sea Kayak Trail.

The 150km trail runs between Ganavan and Helensburgh, incorporating ten access points and the Crinan Canal. It has been provided for all people to enjoy the waters around Argyll, whether for a day of fun, or a multi-day expedition. If you wish to make a comment about any aspect of the trail, please use the contact us page on www.paddleargyll.org.uk. You will also find information about other associated trails on the web site.

The table below details the routes, their distances, and potential time required to complete them based on personal ability and fitness levels. Times provided are based on totally flat conditions, and do not take into account tidal or weather conditions encountered, which can greatly affect them.

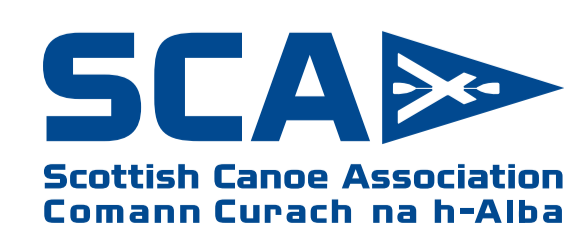
Route	Distance	Beginners	Intermediate	Advanced
Ganavan/Ellenabeich	21km	7hrs	5 hrs 15 mins	3 hrs 30 mins
Ellenabeich/Arduaine	11km	3 hrs 40 mins	2 hrs 50 mins	1 hr 50 mins
Arduaine/Crinan	19 km	6 hrs 20 mins	4 hrs 15 mins	3 hrs 10 mins
Crinan/Ardrishaig	13 km	4 hrs 20 mins	2 hrs 50 mins	2 hrs 10 mins
Ardrishaig/Tarbert	19 km	6 hrs 20 mins	4 hrs 15 mins	3 hrs 10 mins
Tarbert/North Bute	29 km	9 hrs 40 mins	6 hrs 25 mins	4 hrs 50 mins
North Bute/Toward	13 km	4 hrs 20 mins	2 hrs 50 mins	2 hrs 10 mins
Toward/Dunoon	13 km	4 hrs 20 mins	2 hrs 50 mins	2 hrs 10 mins
Dunoon/Helensburgh	16 km	5 hrs 20 mins	3 hrs 30 mins	2 hrs 40 mins
Total	154 km	51 hrs 20 mins	35hrs	25hrs 40 mins

Safety

This site is provided as a coastal access point on the Argyll Sea Kayak Trail. Persons use this access point, and the trail, entirely at their own risk. The providers of this access point shall not be liable for any damage or injury occasioned to persons or their property by virtue of their use of this access point.

Please ensure that you have researched the sections of the Argyll Sea Kayak Trail that you are intending to paddle, including tide and weather information. Always undertake your own risk assessment based on the conditions before you. Wear a buoyancy aid at all times, paddle within your limits, let someone know where you are going and what time you are likely to return, and have another option in case of un-expected conditions. Anyone new to the sport, or indeed a beginner, is advised to seek proper instruction from a paddlesport club or a commercial paddlesport provider.

Contains Ordnance Survey data © Crown copyright and database right 2015



Paddle Argyll is a web-based resource designed to highlight the world class paddling opportunities that exist within the region of Argyll & Bute. Providing details of paddling trails and routes, on lochs, rivers and the sea, as well as key information about paddlesports in general. This will allow paddlers, whether new or experienced, to be introduced to all that is available to them on the water.



Pleadhagaich Earra-Ghàidheil - www.paddleargyll.org.uk

THIS PROJECT WAS PART-FINANCED BY THE SCOTTISH GOVERNMENT AND THE EUROPEAN COMMUNITY ARGYLL AND THE ISLANDS LEADER 2007-2013 Programme.

Working in Partnership with Scottish Canals. www.scottishcanals.co.uk

For more information about paddlesports in Scotland. www.canoescotland.org